

RTS/OTS810 Series Total Station



Technical data

OTS810		RTS810	OTS810		RTS810
Telescope					
Length	156mm		Optical plummet		
Image	Erect		Accuracy	±0.8mm/1.5m	
Objective aperture	φ45mm		Image	Erect	
Magnification	30×		Magnification	3×	
Field of view	1° 30'		Field of view	4°	
Shortest focus distance	1.0m		Focus range	0.5m to ∞	
Angle measurement					
Reading system	Absolute encoder		Laser plummet(Factory optional)		
Angle unit	360°/400gon/mil,selectable		Accuracy	±0.8mm/1.5m	
Display resolution	0.5"/1" (or 0.1mgon/0.2mgon)		Laser class	Class 2/IEC60825-1	
Accuracy	1"/2"/3"/5"		Laser spot size/brightness	Adjustable	
Distance measurement					
Laser class			Laser wavelength	635nm	
Reflectorless	Class 3R (IEC60825-1)		Focus range	0.5m to ∞	
Prism	Class 1 (IEC60825-1)		Display		
Measurement range (Good condition)	1 to 300m		Resolution	3.5" 320 240dots color LCD	
Reflectorless	1 to 300m		Power:		
Reflective sheet/RP30	1 to 700m		Battery	4400mAh Li-Ion Rechargeable	
Single prism	1 to 5000m		Output voltage	7.4V DC	
Three prisms	1 to 2500m		Continuous operation time	8 hours(AI+20 °C)	
Accuracy			Charger	FD07(100V to 240V)	
Prism	2mm+2ppm		Charging time(at+20 °C)	Approx. 4 hours	
Reflectorless	3mm+2ppm		On-board software		
Measuring time			FOIF Survey_TS or FOIF FieldGenius(Factory optional)		
Fine/Rapid/Tracking	1.5s/0.9s/0.5s		Application programs		
Initial	2.5s		Topography/Data collection/Strike out/Resection/REM/MLM		
Display resolution(m/inch selectable)			AREA/OFFset/Point projection/COGO/Road 3D		
Fine mode	0.1mm/1mm		Traverse/Tunnel		
Temperature input range	-30 °C to +60 °C (Steps)		Option only in FOIF Survey_TS		
Pressure input range	510hPa to 1068hPa(1hPa steps)		Others		
Prism constant correction	-99.9mm to +99.9mm		Guide Light System		
Factory optional					
Sensors					
Built-in temperature and pressure sensors					
Compensator:					
Range					
±3'					
Level vial sensitivity					
Plate level vial					
30"/2mm					
Circular level vial					
8"/2mm					
Internal memory					
1GB standard, extendible(2GB)					
Keypoard					
Alphanumerical keyboard, both sides					
Weight(include batteries)					
6.5kg					
Dimensions (WxDxH)					
210x210x360mm					
Operating temperature					
-20 °C to +50 °C					
Storage temperature					
-40 °C to +70 °C					
Interface					
USB host/USB slave/RS-232C/Bluetooth(Optional)					
Water and dust protection					
IP55(IEC60529)					

*1 Standard deviation based on ISO17123-3

*2 Good condition: no haze, visibility about 30km

Illustrations, descriptions and technical specifications are not binding and may change.

FOIF Since 1958
It's professional

Suzhou FOIF Co.,Ltd.

TEL:+86 512 65224904

FAX:+86 512 65230619

http://www.foif.com.cn

E-mail:internationalsales@foif.com.cn

ADD: 4 Kong Fu Si Lane, Suzhou 215006, P.R. China



Janak Positioning & Surveying Systems Pvt. Ltd.

"Ram Group" 304-B, Pal Mohan Plaza, 11/56,

D.B. Gupta Road, Karol Bagh,

New Delhi-110005

Phone: 011-23515400; 23515399; 23617190

Fax: 011-23682185; Mobile: +91-9811008317

janak.ji@yahoo.com; janakji@vsnl.com

www.janakindia.com



Illustrations, description & specifications subject to change without notice.
Printed in India 1/10

RTS/OTS810 s series Windows CE Total Station



Windows CE 5.0 Operating System

The Windows CE operating system, a familiar PC user interface

Professional onboard softwares: FOIF Survey_TS or FOIF FieldGenius

Both two software can work on TS810 series, meet your any needs.

FOIF Survey_TS supports Windows CE total station only.

FOIF FieldGenius supports Windows CE total station and GNSS receiver.



RTS/OTS810 Series Total Station

Large Full Colour Graphic Display

3.5 inch colour TFT LCD(320x240 Dots), and touch screen



Guide Light System

With two colour visible lights, help identify the correct direction for staking out



Dual-Speed Drives

Convenient operation with dual-speed horizontal and vertical drives



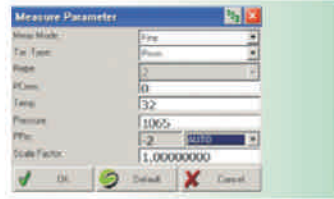
Multiple Interface Options

- USB host, support USB Flash disk directly
- USB slave, MicroSoft's ActiveSync support auto-matically connects with TS810 to show you all the projects on your device. Upload and download with a mouse click
- Traditional RS-232C
- Bluetooth cable-free connection(Factory optional)



Built-in Temperature and Pressure Sensors

With built-in temperature and atmospheric pressure sensors, TS810series can correct atmosphere refraction error automatically.



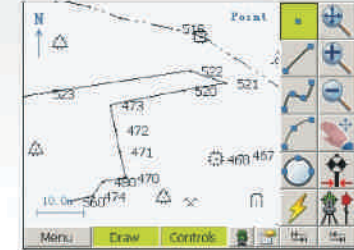
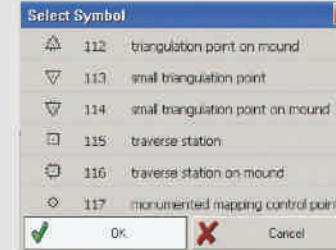
Two Professional onboard software can meet your any needs

They are focused on providing innovative solutions to the survey industry and construction industry such as topography, boundary, tunnel, and road.

FOIF Survey_TS (Standard)

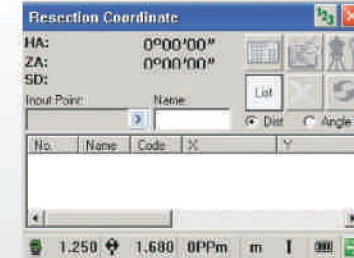
Powerful graph processing function realtime graphing

When measuring in the field, hundreds of points symbol and lines symbol can be selected



Tool bar

The tool bar constantly displays the status of the instrument, you can set or check the station, ppm, reflector, battery level, electronic bubble, guide light and other configurations at any time.

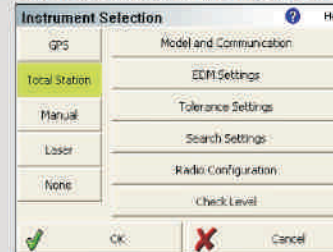


Professional application programs

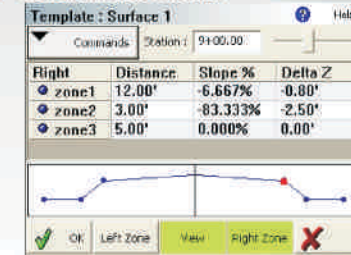
Topography, stakeout, MLM, AREA, REM, offset resection, road 3D(Basic), COGO (Standard) Tunnel program and traverse program (Optional)

FOIF FeldGenius (Advanced)

Same user interface for TS and GNSS



Powerful Road Module



Working with desktop software FOIF Geomatics CAD can increase efficiency and productivity greatly



Digital terrain modeling, volumes, contouring. Import and stake directly from a DXF File.

